

XL TIMING PULLEYS

0.200" Trapezoidal Pitch

For 3/8" Wide Belts

Hub

Steel

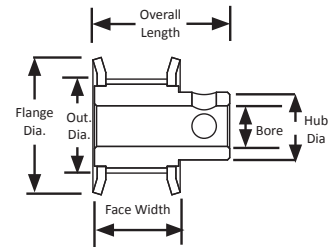
Black Oxide Plating

Finished Bore



| Part Number | No. of Teeth | Type | Pitch Dia. (in) | Out. Dia. (in) | Flange Dia. (in) | Bore (in) | Face Width (in) | Overall Length (in) | Hub Dia. (in) | Set Screw |
|--------------|--------------|------|-----------------|----------------|------------------|-----------|-----------------|---------------------|---------------|------------------|
| 20XL037-6FS3 | 20 | 6F | 1.273 | 1.253 | 1.500 | 0.250 | 0.563 | 0.875 | 0.937 | 2 x 8-32 @ 90° |
| 20XL037-6FS4 | 20 | 6F | 1.273 | 1.253 | 1.500 | 0.313 | 0.563 | 0.875 | 0.937 | 2 x 8-32 @ 90° |
| 20XL037-6FS5 | 20 | 6F | 1.273 | 1.253 | 1.500 | 0.375 | 0.563 | 0.875 | 0.937 | 2 x 10-32 @ 90° |
| 20XL037-6FS6 | 20 | 6F | 1.273 | 1.253 | 1.500 | 0.500 | 0.563 | 0.875 | 0.937 | 2 x 10-32 @ 90° |
| 21XL037-6FS3 | 21 | 6F | 1.337 | 1.317 | 1.563 | 0.250 | 0.563 | 0.875 | 1.000 | 2 x 8-32 @ 90° |
| 22XL037-6FS3 | 22 | 6F | 1.401 | 1.381 | 1.625 | 0.250 | 0.563 | 0.875 | 1.000 | 2 x 8-32 @ 90° |
| 22XL037-6FS4 | 22 | 6F | 1.401 | 1.381 | 1.625 | 0.313 | 0.563 | 0.875 | 1.000 | 2 x 8-32 @ 90° |
| 22XL037-6FS5 | 22 | 6F | 1.401 | 1.381 | 1.625 | 0.375 | 0.563 | 0.875 | 1.000 | 2 x 10-32 @ 90° |
| 22XL037-6FS6 | 22 | 6F | 1.401 | 1.381 | 1.625 | 0.500 | 0.563 | 0.875 | 1.000 | 2 x 10-32 @ 90° |
| 24XL037-6FS3 | 24 | 6F | 1.528 | 1.508 | 1.750 | 0.250 | 0.563 | 0.906 | 1.063 | 2 x 8-32 @ 90° |
| 24XL037-6FS4 | 24 | 6F | 1.528 | 1.508 | 1.750 | 0.313 | 0.563 | 0.906 | 1.063 | 2 x 8-32 @ 90° |
| 24XL037-6FS5 | 24 | 6F | 1.528 | 1.508 | 1.750 | 0.375 | 0.563 | 0.906 | 1.063 | 2 x 10-32 @ 90° |
| 24XL037-6FS6 | 24 | 6F | 1.528 | 1.508 | 1.750 | 0.500 | 0.563 | 0.906 | 1.063 | 2 x 10-32 @ 90° |
| 28XL037-6FS3 | 28 | 6F | 1.783 | 1.763 | 2.000 | 0.250 | 0.563 | 0.906 | 1.188 | 2 x 8-32 @ 90° |
| 28XL037-6FS4 | 28 | 6F | 1.783 | 1.763 | 2.000 | 0.313 | 0.563 | 0.906 | 1.188 | 2 x 8-32 @ 90° |
| 28XL037-6FS5 | 28 | 6F | 1.783 | 1.763 | 2.000 | 0.375 | 0.563 | 0.906 | 1.188 | 2 x 10-32 @ 90° |
| 28XL037-6FS6 | 28 | 6F | 1.783 | 1.763 | 2.000 | 0.500 | 0.563 | 0.906 | 1.188 | 2 x 10-32 @ 90° |
| 30XL037-6FS4 | 30 | 6F | 1.910 | 1.890 | 2.125 | 0.313 | 0.563 | 0.906 | 1.312 | 2 x 8-32 @ 90° |
| 30XL037-6FS5 | 30 | 6F | 1.910 | 1.890 | 2.125 | 0.375 | 0.563 | 0.906 | 1.312 | 2 x 10-32 @ 90° |
| 32XL037-6S4 | 32 | 6 | 2.037 | 2.017 | - | 0.313 | 0.563 | 1.000 | 1.500 | 2 X 1/4-20 @ 90° |
| 36XL037-6S4 | 36 | 6 | 2.292 | 2.272 | - | 0.313 | 0.563 | 1.000 | 1.500 | 2 X 1/4-20 @ 90° |
| 40XL037-6S4 | 40 | 6 | 2.546 | 2.526 | - | 0.313 | 0.563 | 1.000 | 1.500 | 2 X 1/4-20 @ 90° |
| 42XL037-6S4 | 42 | 6 | 2.674 | 2.654 | - | 0.313 | 0.563 | 1.000 | 1.500 | 2 X 1/4-20 @ 90° |
| 44XL037-6S4 | 44 | 6 | 2.801 | 2.781 | - | 0.313 | 0.563 | 1.000 | 1.500 | 2 X 1/4-20 @ 90° |
| 48XL037-6S4 | 48 | 6 | 3.056 | 3.036 | - | 0.313 | 0.563 | 1.000 | 1.500 | 2 X 1/4-20 @ 90° |
| 60XL037-6S5 | 60 | 6 | 3.820 | 3.800 | - | 0.375 | 0.563 | 1.000 | 1.500 | 2 X 1/4-20 @ 90° |
| 72XL037-6S5 | 72 | 6 | 4.584 | 4.564 | - | 0.375 | 0.563 | 1.000 | 1.500 | 2 X 1/4-20 @ 90° |

TYPE 6F



TYPE 6

